



PL4SD – Peer Learning for the Social Dimension in the EHEA

COMMIT 20.5.2014, Barcelona

www.pl4sd.eu

info@pl4sd.eu

www.pl4sd.eu
info@pl4sd.eu



Social Dimension

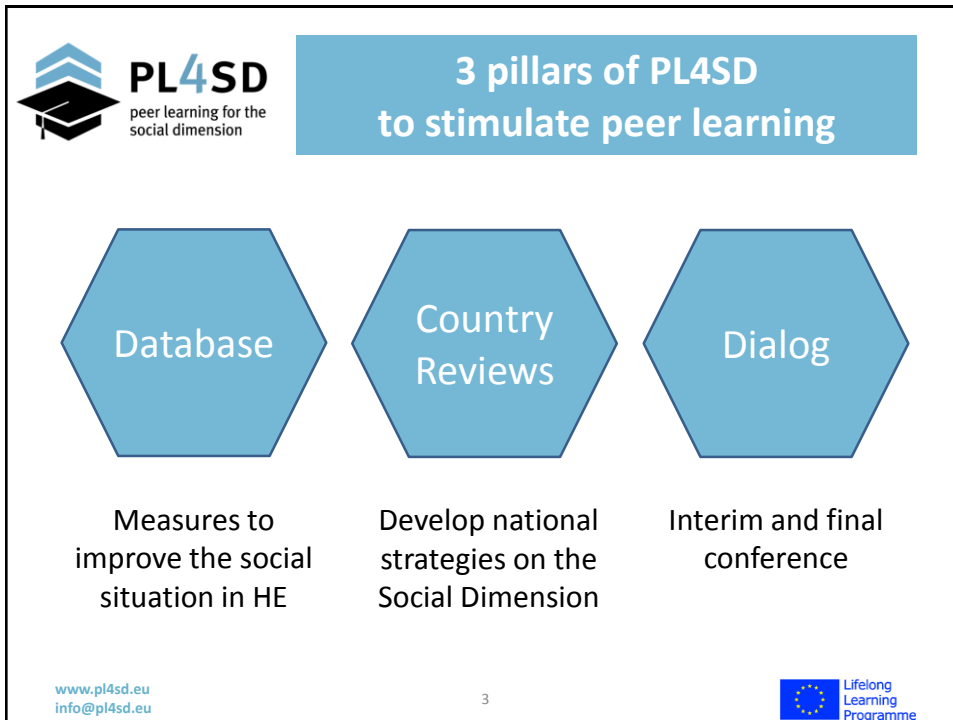
"We share the societal aspiration that the student body entering, participating in and completing higher education at all levels should reflect the diversity of our populations. We reaffirm the importance of students being able to complete their studies without obstacles related to their social and economic background. We therefore continue our efforts to provide adequate student services, create more flexible learning pathways into and within higher education, and to widen participation at all levels on the basis of equal opportunity."

London Communiqué 2007

www.pl4sd.eu
info@pl4sd.eu

2





The slide is titled 'Database' and provides details about the collection of measures. It features the PL4SD logo at the top left. The main content is a list of bullet points describing the process. At the bottom left is the website 'www.pl4sd.eu' and email 'info@pl4sd.eu'. At the bottom center is the number '4'. At the bottom right is the European Union flag and the text 'Lifelong Learning Programme'.

PL4SD
peer learning for the social dimension

Database

- We invited Ministries and Stakeholder Organisations to provide measures for improving SD of students
- First round of collating measures in 2013:
 - More than 230 measures from 25 countries
 - More than 100 research papers/ reports etc.
- Next rounds end of May 2014 and 2015
- Everybody can submit measures via database
- Tool for commenting on measures (soon)

www.pl4sd.eu
info@pl4sd.eu

4

Lifelong Learning Programme



PL4SD
peer learning for the
social dimension

Database: Categorisation

- **Student target group of measure (15 + other):**
general student population, by gender, ethnic minorities, from lower socioeconomic backgrounds, from migrant backgrounds, from rural or remote regions, international students, mature students, orphans, prospective students, with children, with disabilities, with siblings, without the normally required entrance qualifications ,working students
- **Objective of measure (7 + other):**
widening access, retention and success, combining study and work, lifelong learning, international mobility, monitoring and evaluation, student support
- **Type of measure (10 + other):**
student financial support, funding incentives for institutions, counselling and support services, teaching and learning, information campaigns, enrolment policies, alternative entry routes, flexible learning paths, cooperation with schools, data collection and research

➤ **Country (47)**

www.pl4sd.eu
info@pl4sd.eu

5



PL4SD
peer learning for the
social dimension

Database online

www.pl4sd.eu
info@pl4sd.eu

6





PL4SD
peer learning for the
social dimension

Country Reviews

- CR to assist in developing a national strategy on SD
- International experts from policy making, institutional and student perspectives, research
- Three reviews planned:
 - Lithuania: May 2014
 - Armenia: September 2014
 - Croatia: October 2014
- If resources allow us to do
 - Romania: Spring 2015
- Results at final conference to let other countries profit from this experience

www.pl4sd.eu
info@pl4sd.eu

7



PL4SD
peer learning for the
social dimension

Interim Conference 2/3.4.2014

- Hosted by Austrian Ministry of Science
- ≈ 70 participants from 23 countries and international organisations, mainly from Ministries
- 1st day: Focus on measures
- 2nd day: Focus on national strategies
- All days: Stimulate exchange of experiences
- Conference report, presentations and audio files online asap

www.pl4sd.eu
info@pl4sd.eu

8





PL4SD
peer learning for the
social dimension

The SD in European HE

25-27.2.2015, Vienna, Univ. of Economics

- Presentation of 
Data on the social situation of students in Europe

- Final conference of  **PL4SD**
peer learning for the
social dimension
Measures to improve the social situation of students



www.pl4sd.eu
info@pl4sd.eu

9



PL4SD
peer learning for the
social dimension

How to measure the Social Dimension ?

- Identify underrepresented groups
 - On system level
 - At individual HEIs
- Some can be identified with administrative data, others only with (prospective) student surveys
- For international comparison: 
EUROSTUDENT V will have data 
on many „focus groups“ among them „delayed transition students“

www.pl4sd.eu
info@pl4sd.eu

10

